



# 3615/4415/6015 Trim Kit Installation

See SKU's Below

## Compatibility with Early 4415 Fireplaces

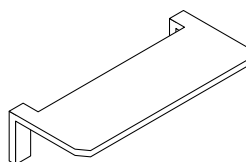
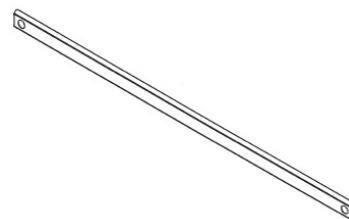
### **4415 – First 315 Units ARE NOT COMPATIBLE**

4415 fireplaces, serial number 3212-000001 through 3212-000315 are not compatible with the trim kit (the firebox opening was not wide enough).

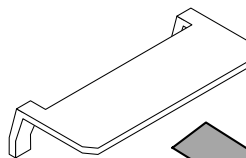
### **4415 – Early Units REQUIRE NEW CONCEALMENT COVER**

4415 fireplaces, serial number 3212-000316 through 3212-000883 used a concealment cover that is too wide for the 4415 trim kit. If you have one of these units, contact Travis Industries to receive a revised concealment cover (part # 250-03302).

In addition, you will need to widen the two ledges the concealment cover rests on inside the fireplace. Use a screwdriver to widen the ledge as shown below.



Before

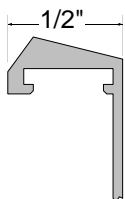


After

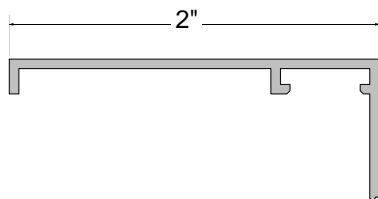
## Sizing / SKU's

### Cross Section of Trim

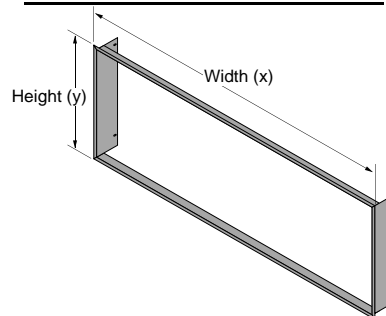
Beveled Trim



2" Rectangular Trim



### Trim Exterior Dimensions



	SKU	Minimum Facing Depth	Maximum Facing Depth	Exterior Width (x)	Exterior Height (y)
3615 Beveled Trim - Standard	95900388	1/2"	7/8"	38"	16.625"
3615 Beveled Trim - Thick Facing	95900390	1"	1-1/2"	38"	16.625"
3615 2" Rectangular Trim	95900374	1/2"	1"	41"	19.625"
4415 Standard Facing Kit	95900392	1/2"	7/8"	46"	16.625"
4415 Thick Facing Kit	95900394	1"	1-1/2"	46"	16.625"
4415 2" Rectangular Trim	95900376	1/2"	1"	49"	19.625"
6015 Standard Facing Kit	95900396	1/2"	7/8"	62"	16.625"
6015 Thick Facing Kit	95900398	1"	1-1/2"	62"	16.625"
6015 2" Rectangular Trim	95900378	1/2"	1"	65"	19.625"



# 3615/4415/6015 Trim Kit Installation

See SKU's Below

## Packing List

- (2) Side Pieces
- (2) Top/Bottom Trim Pieces
- L Bracket Hardware (4 L Brackets with 2 Set Screws Pre-Installed, 4 L Spacers)
- (4) 8-32 x 3/8" Screws
- (2) Top Trim Clamps

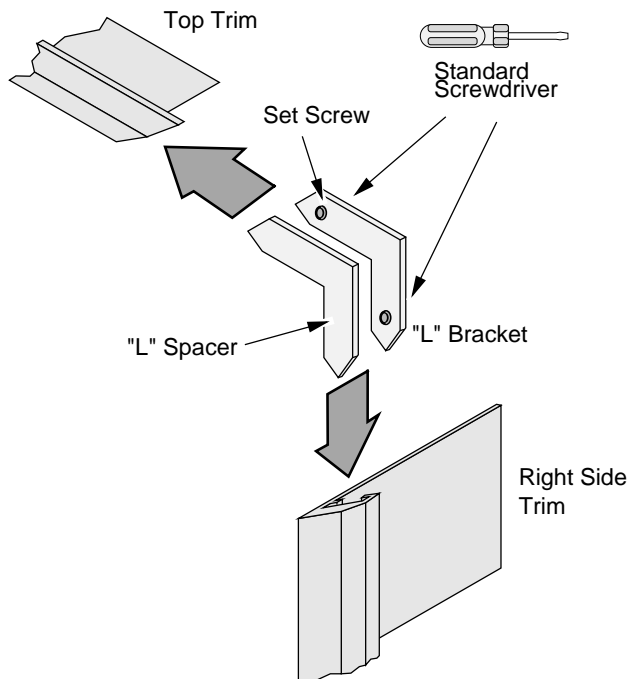
## Installation

**WARNING** Turn off gas to the appliance and make sure it has fully cooled prior to conducting service.

### **HINT: Blacken the Edges of the Extruded Trim**

Before constructing the trim assembly, use a black permanent marker to blacken the outer silver edges of the extruded trim.

- 1 The trim is attached after the fireplace is in place with the non-combustible facing installed.
- 2 Assemble the trim kit as shown below. Use one L bracket and spacer for each corner. Use a screwdriver to tighten the set screws from behind. If the corners are not aligned, loosen the screws, align, and re-tighten.



- 3 Remove the screen and glass frame from the fireplace (see the installation manual for details).

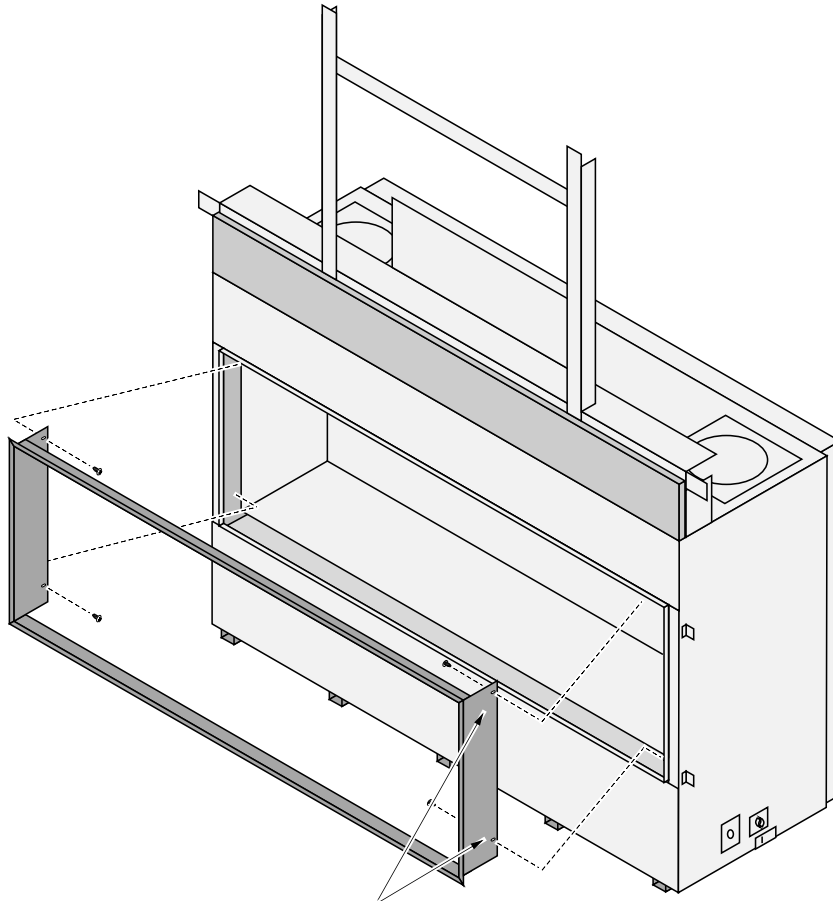


TRAVIS INDUSTRIES  
HOUSE OF FIRE

## 3615/4415/6015 Trim Kit Installation

See SKU's Below

- 4 Place the trim in place, taking care to not scratch the surfaces. Once it is fully in place, use the included screws to secure the trim to the fireplace.



**i** **Make sure to install the trim right side up. Note how the side holes are positioned (the smaller gap is to the top).**

When tightening the screws, push the trim against the facing to ensure a seamless fit.



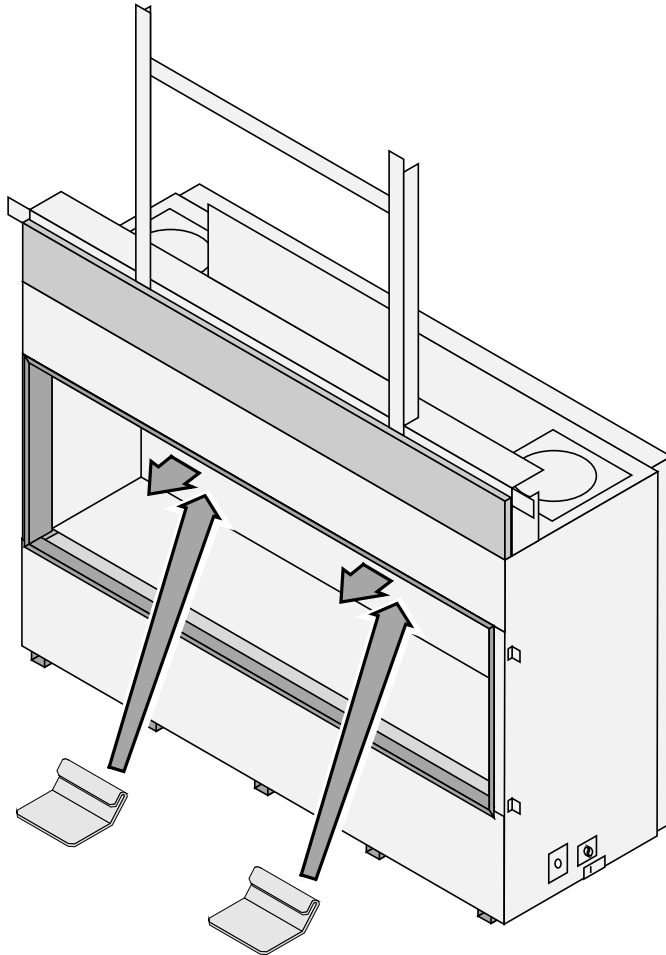


TRAVIS INDUSTRIES  
HOUSE OF FIRE

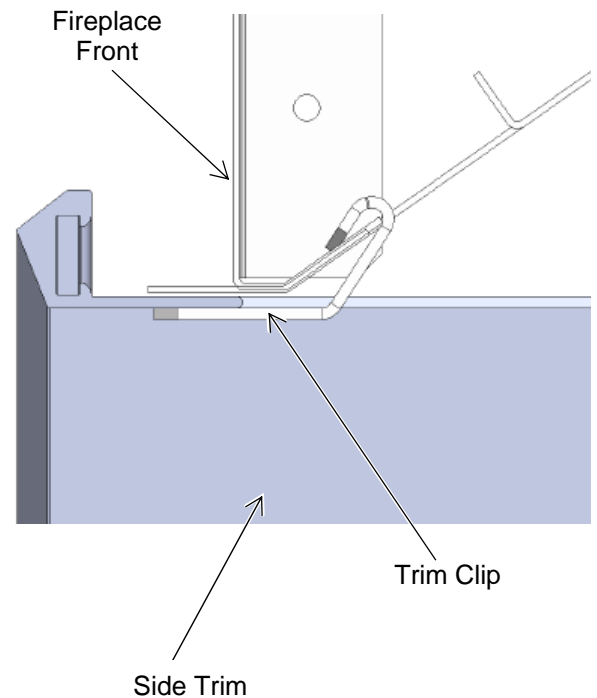
## 3615/4415/6015 Trim Kit Installation

See SKU's Below

- 5 Install the two top clips as shown below. When installing, make sure to place the clips off-center, away from any rivets or supports. The clips slide under the trim, and as they are moved forward, secure the trim against the fireplace opening (see the illustrations below).



SIDE VIEW (CUTAWAY)



- 6 Restore the fireplace to the correct configuration.